

Transaxle Replacement Kit

Models: 5680, 5700, 5700XP, 5700EE



This kit includes the necessary parts to replace a defective transaxle. The new transaxle w/brake kit 9011942 is equipped with an electric brake system. For models equipped with the parking brake pedal, the new kit will replace the mechanical parking brake assembly. Follow installation instructions as described below.

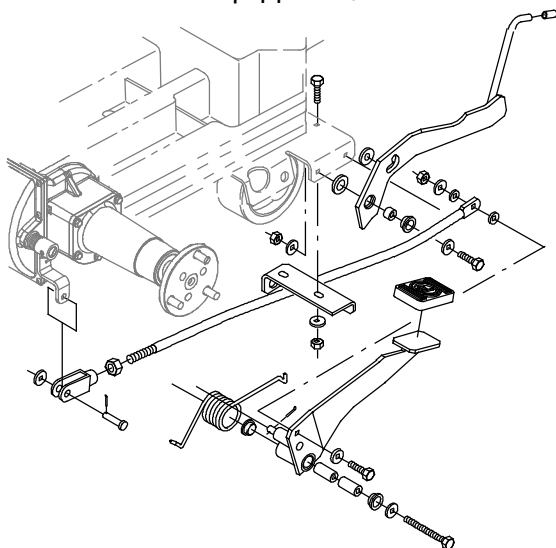
INSTALLATION INSTRUCTIONS:

Installation Time: 1.5 Hours, 2 Hours- kit w/brake

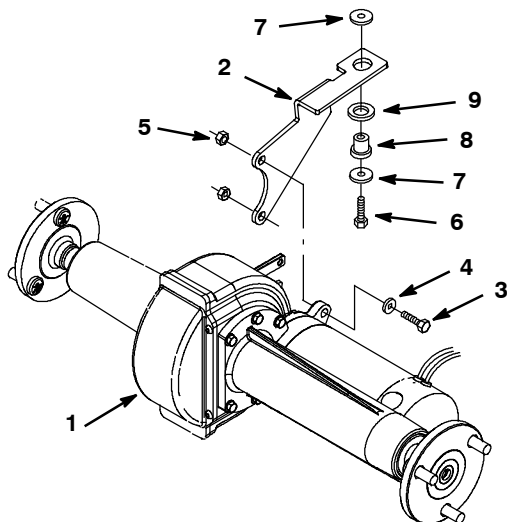
Special Tools Required: Wire harness puller.

FOR SAFETY: Before servicing machine, stop on level surface, turn off machine, and remove key.

1. Remove old transaxle from machine. Refer to Service Manual for removal instructions.
2. Remove parking brake assembly, if equipped. New transaxle is equipped w/ electric brake.



3. Install new transaxle using new bracket and hardware as shown. Refer to parts list.

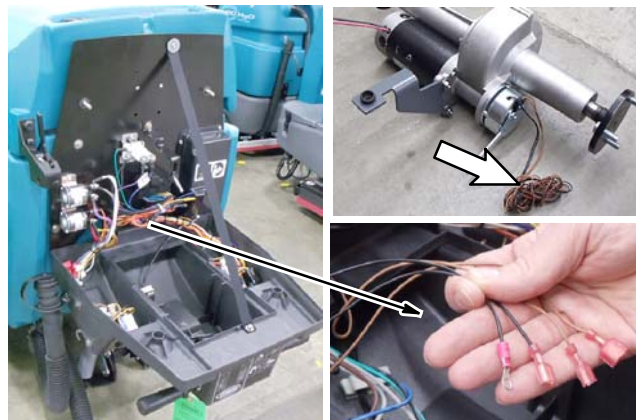


4. Continue with next step if installing transaxle w/brake kit 9011942.

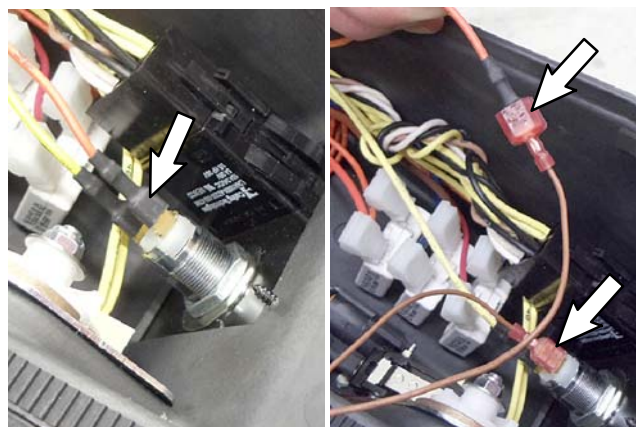
Kit Contents Parts List

Ref Part No.	Description	Qty.
1 1072422	Transaxle Assembly (kit 9011941)	1
1 1072423	Transaxle Assembly, w/Brake (kit 9011942)	1
2 1072660	Bracket, Mount, Transaxle	1
3 09011	Screw, Hex, M8 x 1.25 x 30, ss	2
4 01685	Washer, Flat, 0.38B 0.88D .08,ss	2
5 08713	Nut, Hex, Lock, M8 x 1.25,nl, ss	2
6 59658	Screw, Hex, M8 x 1.25 x 35, nl, ss	1
7 1014563	Washer, Flat, 0.40B 1.12D .12, ss	2
8 54274	Isolator, Vib, Bushing, 1.1D 0.6L .4B 0.78H	1
9 39350	Washer, Flat, 0.75, sae	1
10 1073571	Harness, Adapter, brake (kit 9011942)	1
11 1073642	Harness, Adapter, contrl, 5700XP (kit 9011942)	1

5. Using a wire puller, route the wires from the transaxle electric brake along side the main machine harness up to the control housing.

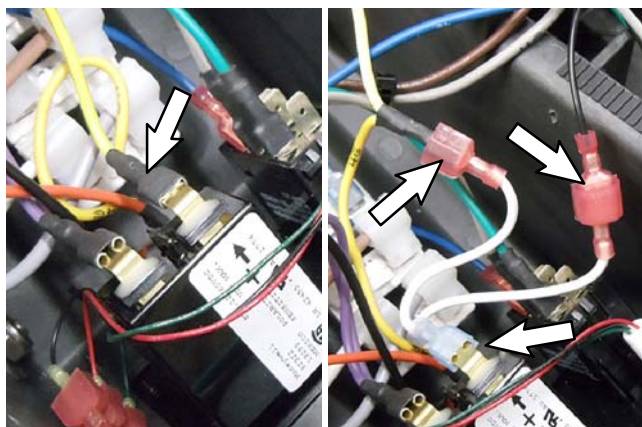


6. Disconnect the orange wire from key switch then connect the two brown wires from transaxle to key switch and orange wire.

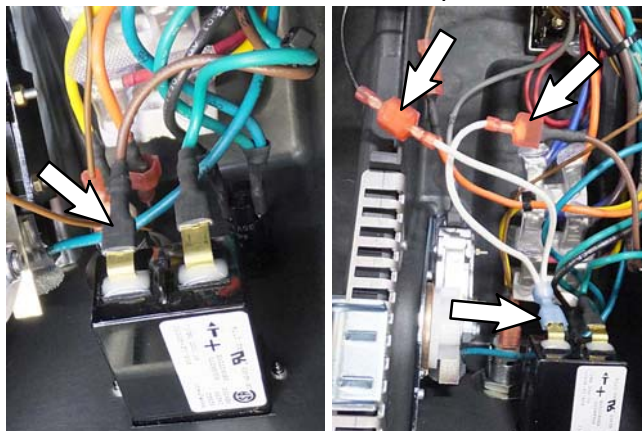


Transaxle Replacement Kit INSTALLATION INSTRUCTIONS - Continued

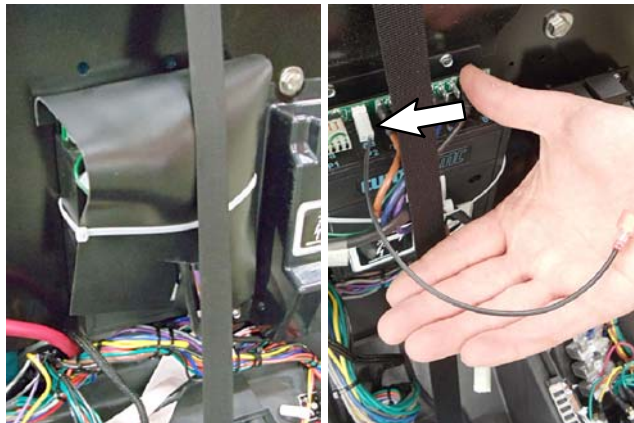
7. For 5680 model, disconnect the wire terminal that has two yellow wires from hour meter and install the new white wire adapter to hour meter as shown. Reconnect the wire terminal with two yellow wires to the white wire adapter. Connect the black wire from the transaxle to the white wire adapter.



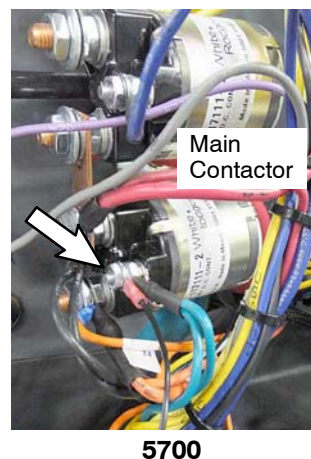
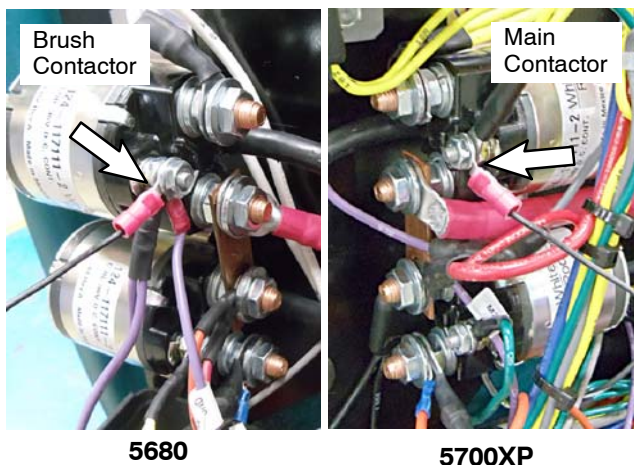
For 5700/5700EE models, disconnect the brown wire from hour meter and install the new white wire adapter to hour meter as shown. Reconnect the brown wire to the white wire adapter. Connect the black wire from the transaxle to the white wire adapter.



For 5700XP model, connect the black wire adapter, supplied with kit, to the open terminal on control board as shown. Then connect the black wire adapter to the black wire from new transaxle.



8. Connect the remaining black wire with ring terminal from transaxle to contactor as shown.



Transaxle Replacement Kit INSTALLATION INSTRUCTIONS - Continued

9. After installing kit, test machine for proper operation.

The electric brake will automatically engage when roll grips are released and disengage when roll grips are rotated.

10. The electric brake is equipped with a manual brake lever. This allows you to manually push or pull machine if machine becomes disabled. Position the lever in the down position to disengage the brake. Otherwise always keep the lever in the UP position to prevent a roll hazard.

NOTE: Power to machine is disabled when brake lever is in the down position.

